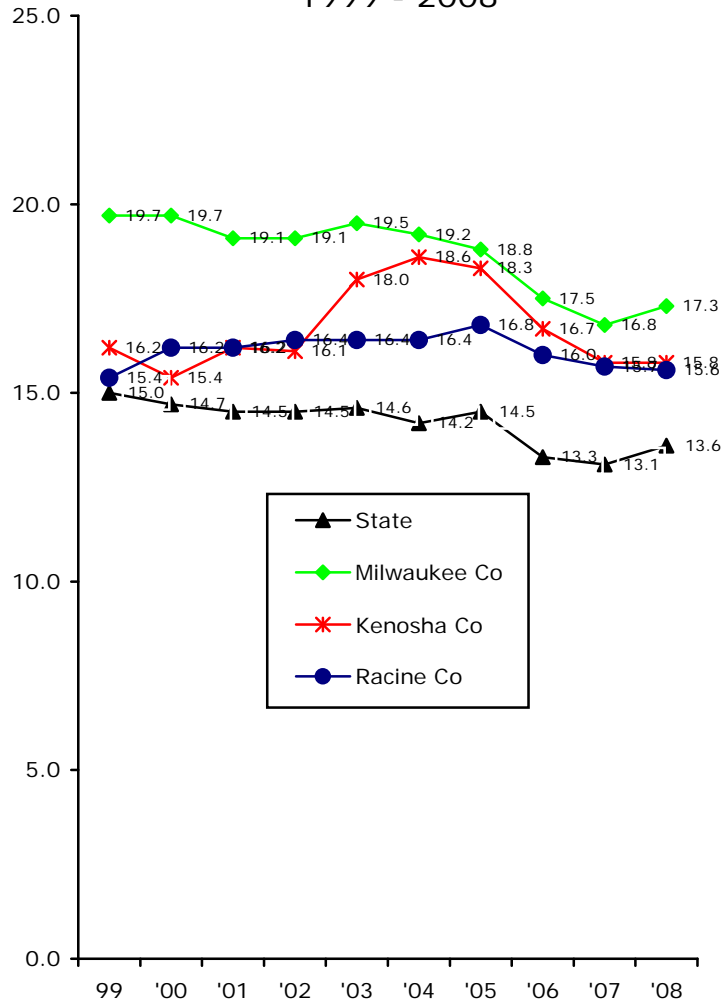
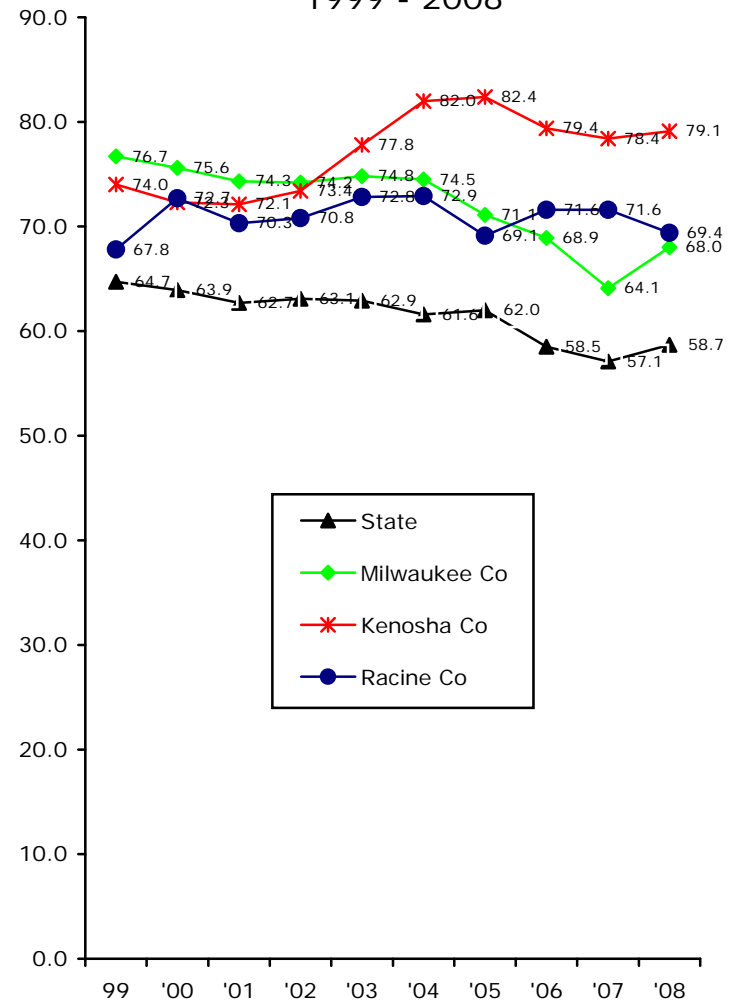


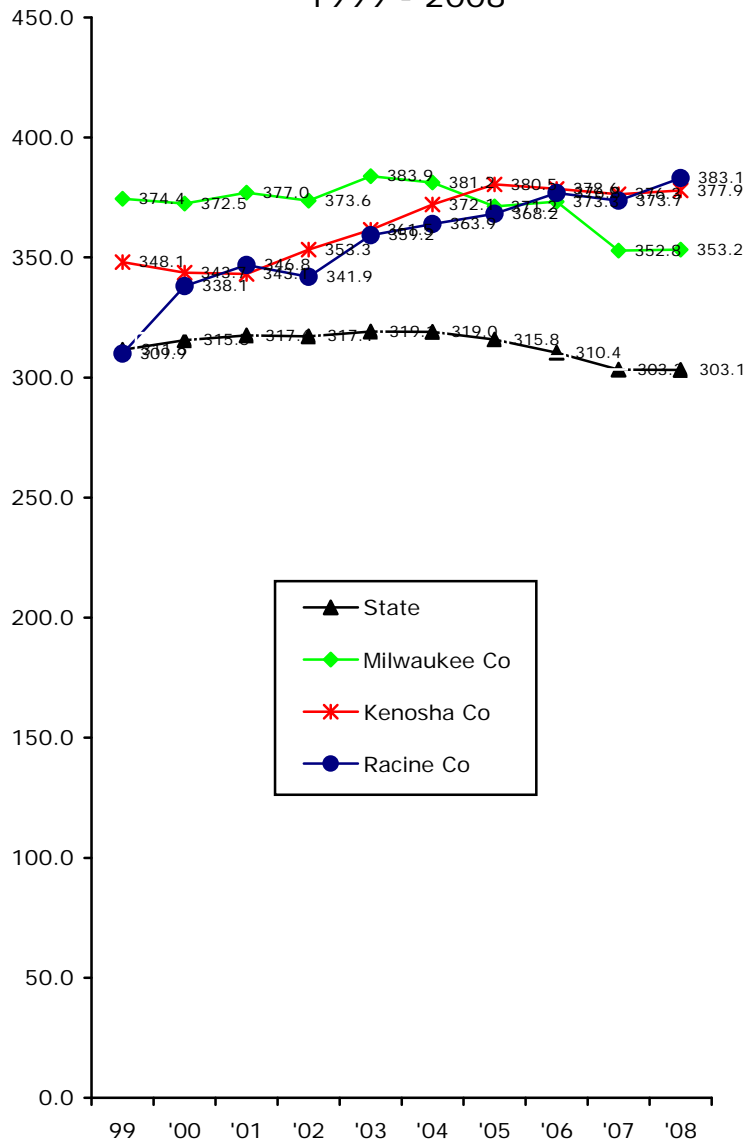
SE Wisconsin & Statewide
Preventable Hospitalization Rates
Per 1,000 Population All Ages
1999 - 2008



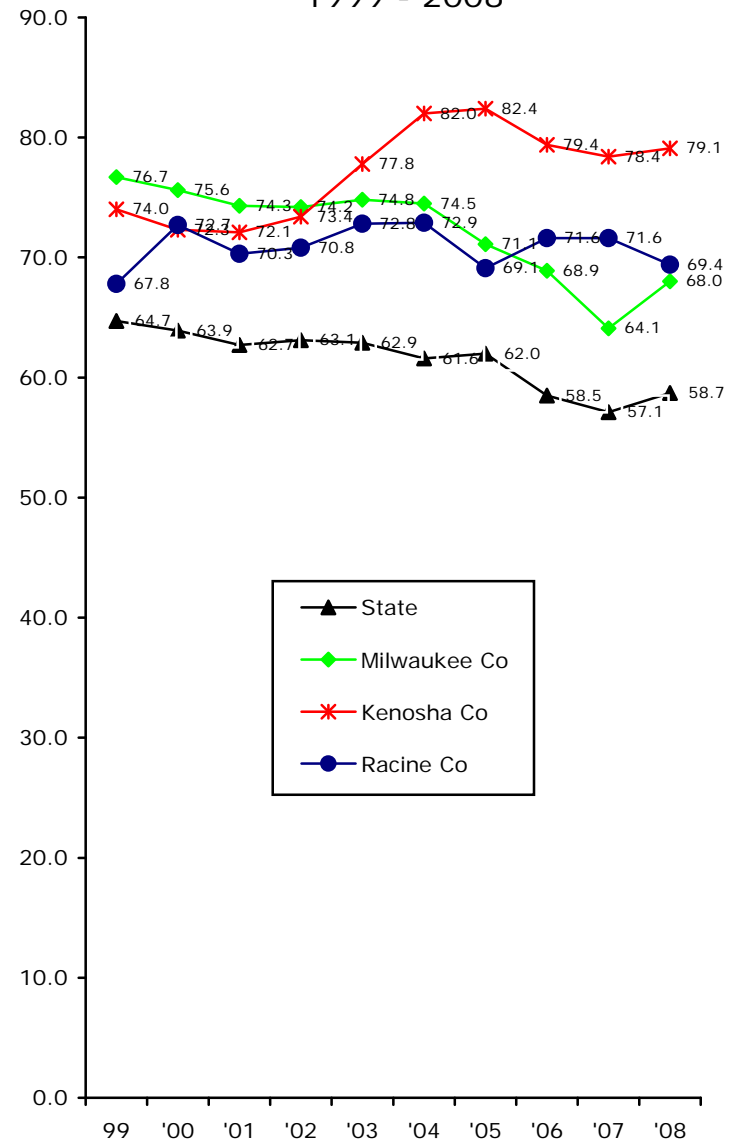
SE Wisconsin & Statewide
Preventable Hospitalization Rates
Per 1,000 Population Aged 65+
1999 - 2008



SE Wisconsin & Statewide
Hospitalization Rates
Per 1,000 Population Aged 65+
1999 - 2008



SE Wisconsin & Statewide
Preventable Hospitalization Rates
Per 1,000 Population Aged 65+
1999 - 2008



AHRQ – Healthcare Cost and Utilization Project
Statistical Brief #83
Potentially Preventable Hospitalization Rates Declined for Older Adults, 2003-2007
December, 2009
<http://www.hcup-us.ahrq.gov/reports/statbriefs/sb83.pdf>

AHRQ – Healthcare Cost and Utilization Project
Statistical Brief #80
Emergency Department Visits for Injurious Falls among the Elderly, 2006
October, 2009
<http://www.hcup-us.ahrq.gov/reports/statbriefs/sb80.pdf>