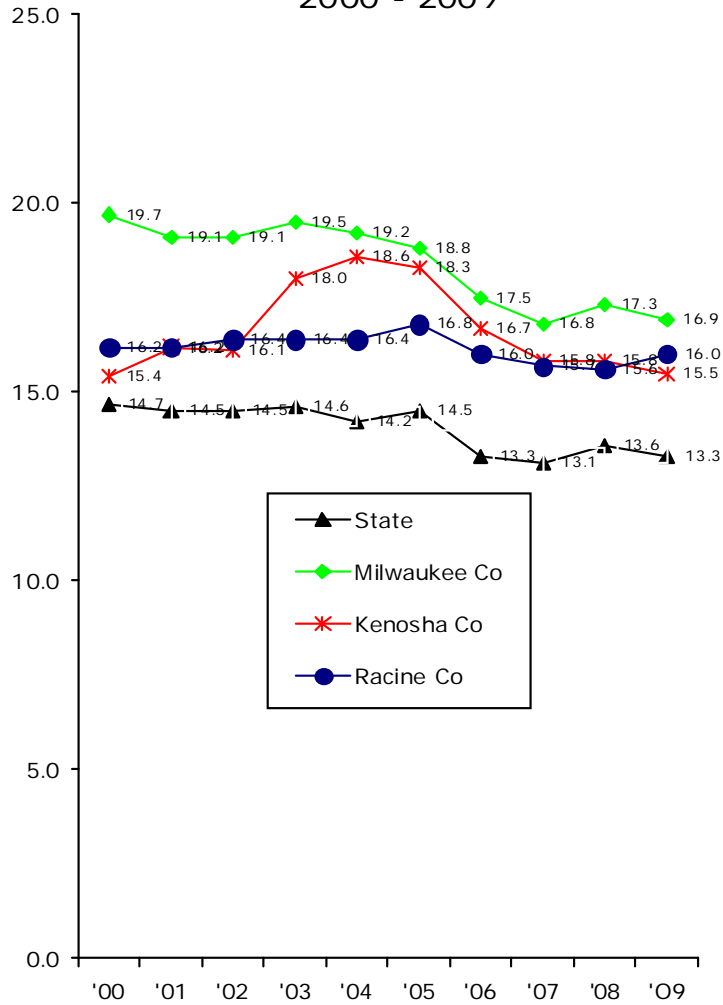
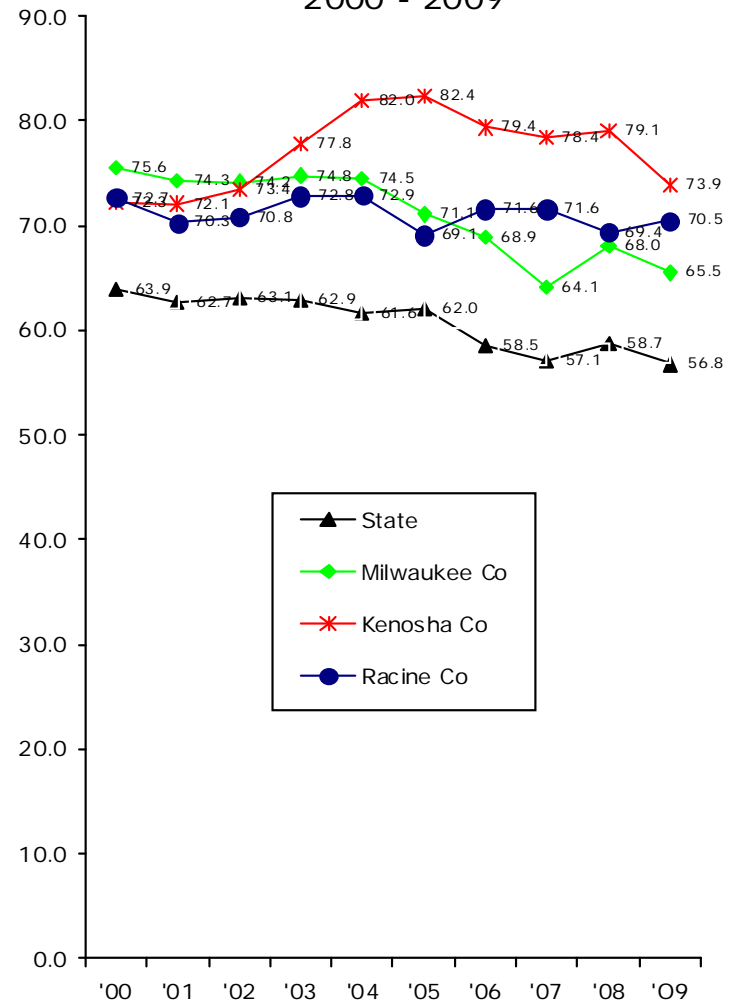


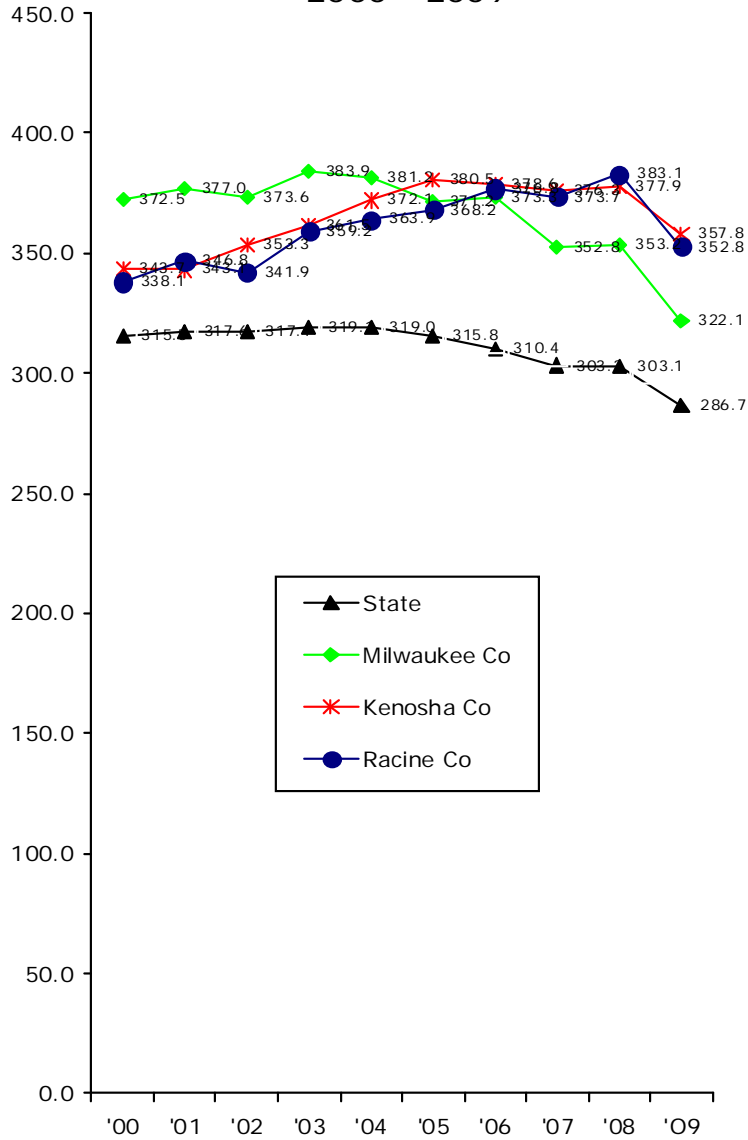
SE Wisconsin & Statewide  
Preventable Hospitalization Rates  
Per 1,000 Population All Ages  
2000 - 2009



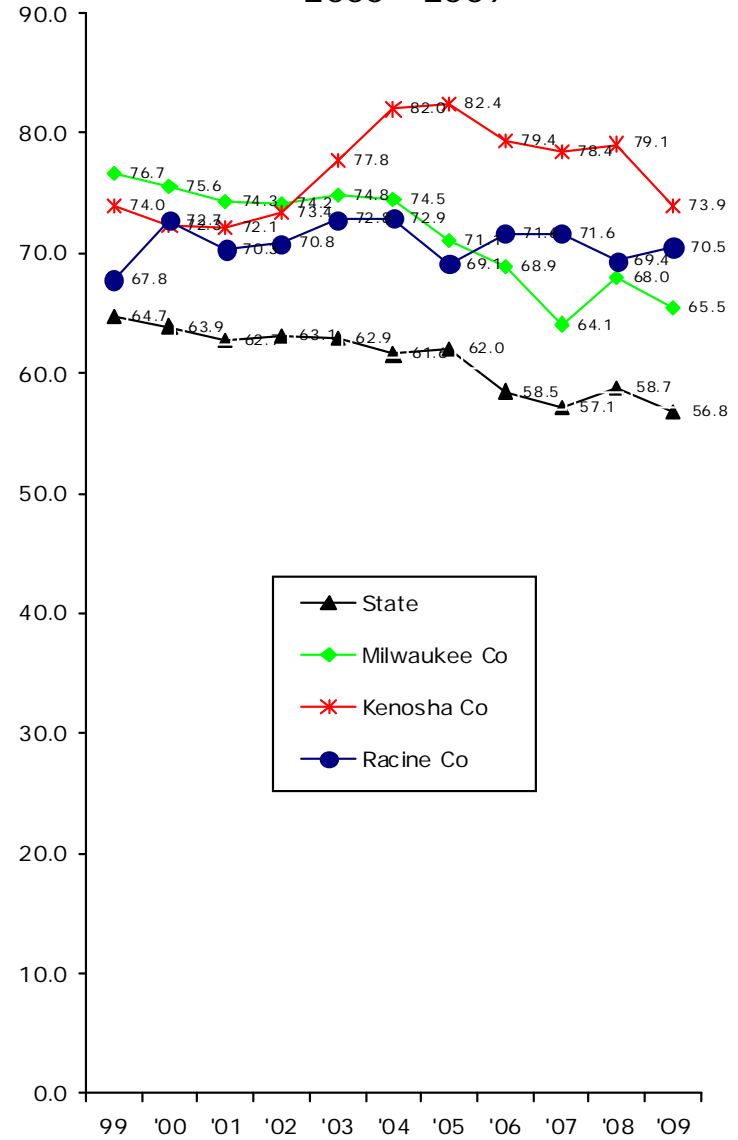
SE Wisconsin & Statewide  
Preventable Hospitalization Rates  
Per 1,000 Population Aged 65+  
2000 - 2009



SE Wisconsin & Statewide  
Hospitalization Rates  
Per 1,000 Population Aged 65+  
2000 - 2009



SE Wisconsin & Statewide  
Preventable Hospitalization Rates  
Per 1,000 Population Aged 65+  
2000 - 2009



AHRQ – Healthcare Cost and Utilization Project  
**Statistical Brief #83**  
**Potentially Preventable Hospitalization Rates Declined for Older Adults, 2003-2007**  
December, 2009  
<http://www.hcup-us.ahrq.gov/reports/statbriefs/sb83.pdf>

AHRQ – Healthcare Cost and Utilization Project  
**Statistical Brief #80**  
**Emergency Department Visits for Injurious Falls among the Elderly, 2006**  
October, 2009  
<http://www.hcup-us.ahrq.gov/reports/statbriefs/sb80.pdf>