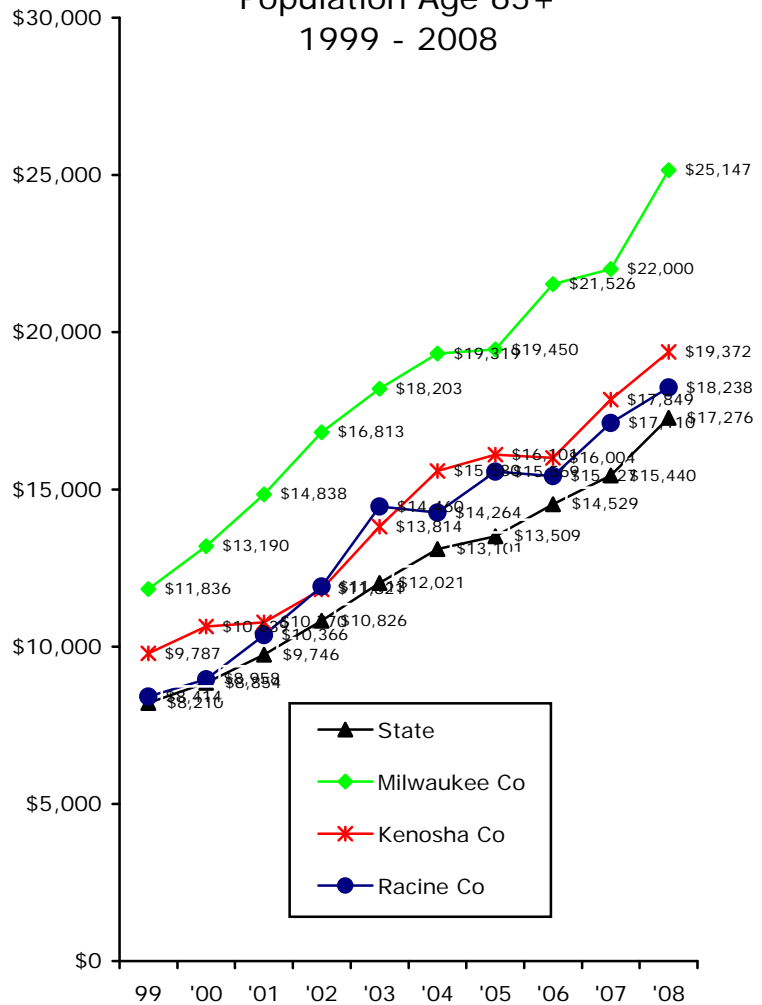
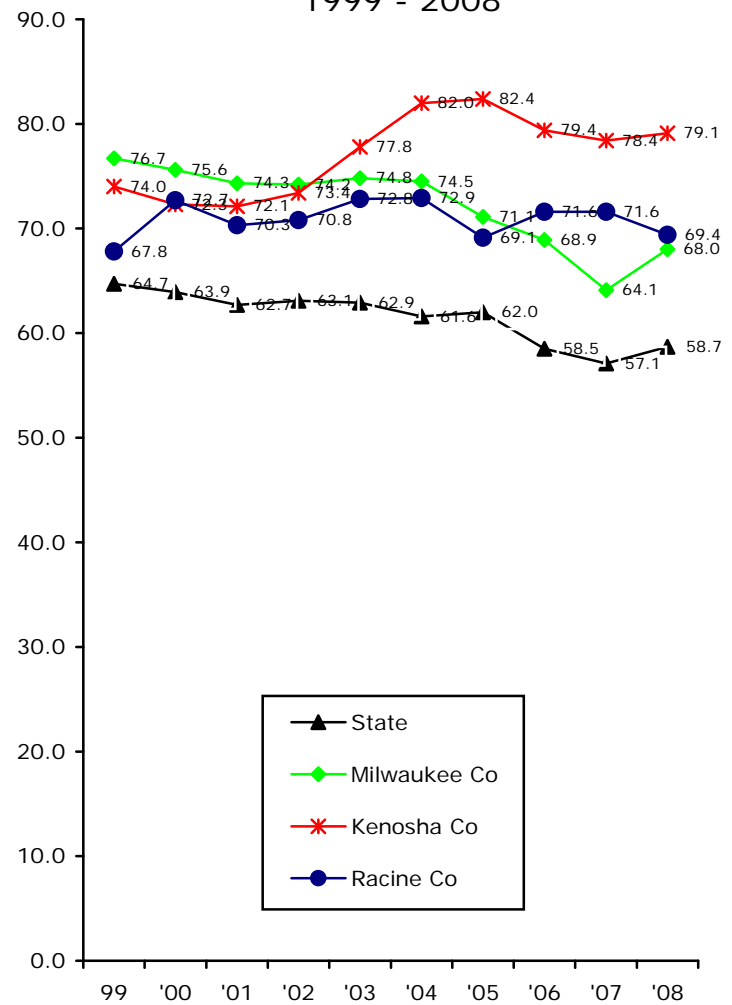


SE Wisconsin & Statewide
Average Charge Per
Preventable Hospitalization
Population Age 65+
1999 - 2008



SE Wisconsin & Statewide
Preventable Hospitalization Rates
Per 1,000 Population Aged 65+
1999 - 2008



<http://dhs.wisconsin.gov/localdata/pubhlthprofiles.htm#>